

J.L.G.
DRAWN BY:
H.A.K.
CHECKED BY:
H.A.K.
APPROVED BY:
OCTOBER 2009
DATE:

REVISIONS
MAY 2, 2012
JANUARY 24, 2019

PLAT OF 3.434 ACRES,
BEING LOT 7, BLOCK 1, NEW CITY BLOCK 17184,
COKER CEMETERY ESTABLISHED 1857,
PLAT RECORDED IN VOLUME 9567, PAGE 130,
CITY OF SAN ANTONIO,
BEXAR COUNTY, TEXAS.

H.A. KUEHLEM
PROFESSIONAL SURVEYORS
A Brelviere Company
14350 NORTHBROOK DRIVE SUITE 130
SAN ANTONIO, TEXAS 78232
PH: (210) 490-7847 FAX: (210) 490-7857
FIRM REGISTRATION NO. 10059500

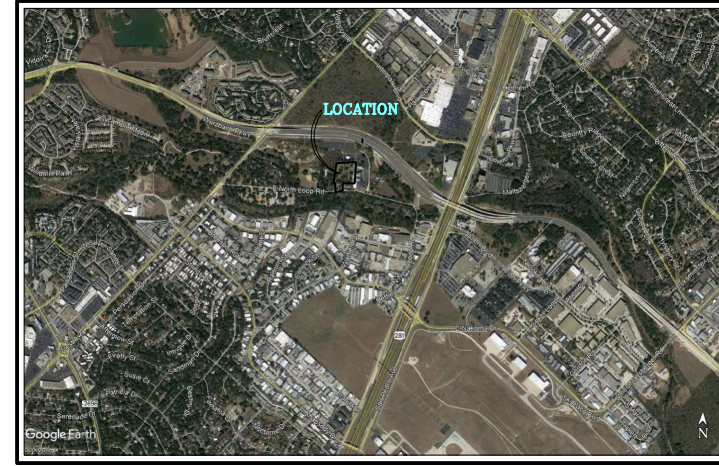


SHEET: **1**
OF: **5**



SCALE: 1" = 30'

VICINITY MAP
N.T.S.



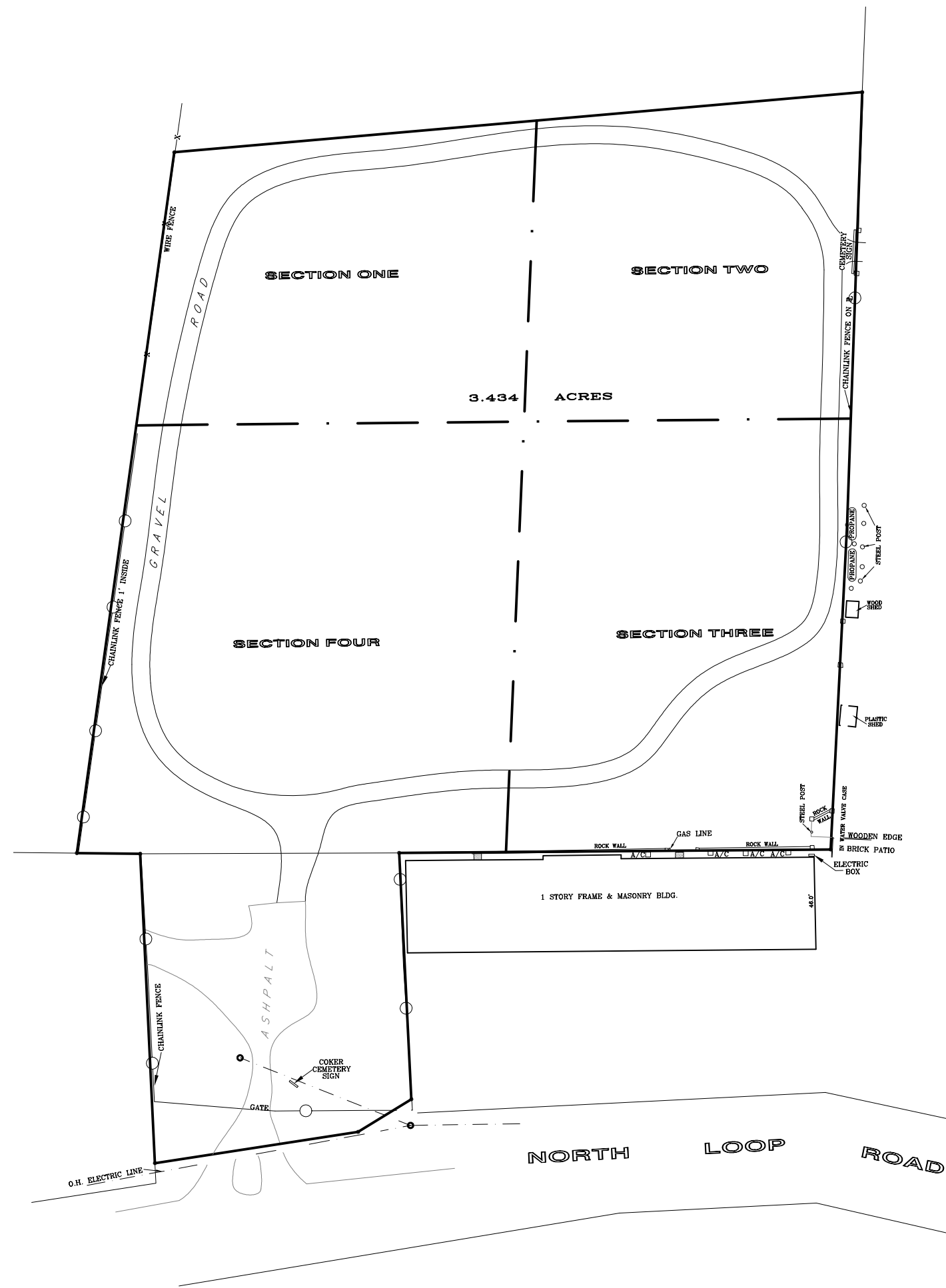
TYPICAL
48' X 48' GRID DETAIL
GRAVE SITES ARE 4' X 8'

1	2	3	4	5	6	7	8	9	10	11	12
13	14	15	16	17	18	19	20	21	22	23	24
25	26	27	28	29	30	31	32	33	34	35	36
37	38	39	40	41	42	43	44	45	46	47	48
49	50	51	52	53	54	55	56	57	58	59	60
61	62	63	64	65	66	67	68	69	70	71	72

ALUMINUM DISK ON IRON PIN
WITH PUNCH MARK

TYPICAL LEGEND

- PLOT MARKER
- HOSE BIBB
- CONCRETE CURB
- 48'X48' GRID CORNERS
- FOOTSTONE
- HEADSTONE
- ROCK FOR HEADSTONE
- IRON FENCE
- CONCRETE
- HISTORICAL MARKER
- RESERVED PLOT
- UNKNOWN GRAVE



H.A.K.
HENRY A. KUEHLEM
REGISTERED PROFESSIONAL LAND SURVEYOR
NO. 4020
JOB NO. 18313